

Level 3

Teaching Assistant



Hello!

Teaching assistants are found in primary, secondary, specialist schools, alternative provision, and further education institutions (such as sixth forms and colleges).

Teaching assistants work with all age ranges and support many types of learners. They may support learners with special educational needs and disabilities, and learners with social, emotional, and mental health vulnerabilities.

In their daily work, Teaching Assistants help ensure that learners understand their work and know their learning objectives. Teaching Assistants also work in partnership with teachers and other professionals within the education system, as well as with learners' parents or carers.

Teaching Assistants are responsible for:

- Delivering individual and small group teaching.
- Adapting planning under the direction of a teacher.
- Implementing safeguarding policies and safe practice.
- Promoting positive learning behaviours.
- Working effectively with other education professionals.



Programme Overview

Logical Training* design and deliver meaningful development programmes and have been recognised by Ofsted for the quality of their curriculum, leadership and tutor support.

Our 15-month programme develops knowledge and skills through monthly group workshops, workplace activities, individual coaching sessions.

Each learner follows an individualised learning plan and is given access to a digital library of tools and resources.

Who the programme is designed for

Typical job titles include Teaching Assistant; Assistant Teacher; Classroom Assistant; Learning Support Assistant; Learning Support Worker.

*Logical Training is the training division of Skills Office Network



15 MONTHS IS THE TYPICAL PROGRAMME DURATION



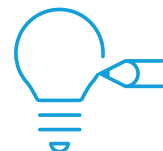
ONLINE WORKSHOPS EVERY MONTH



ACCESS TO A DIGITAL LIBRARY



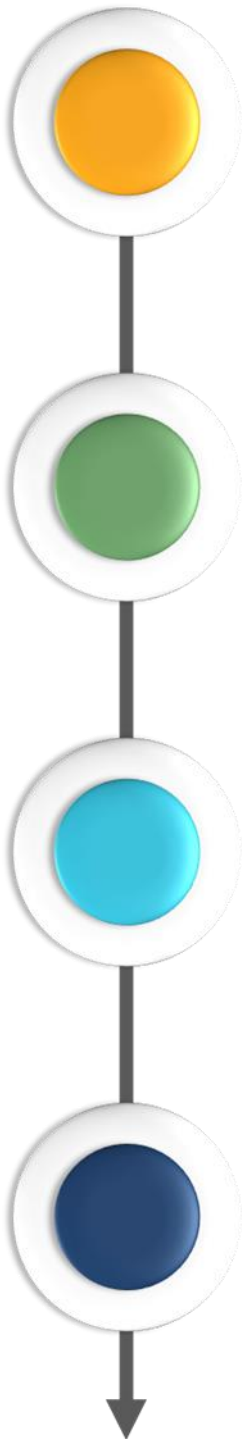
LEARNING PLATFORM WITH TWO-WAY COMMUNICATION



IMPACTFUL WORKPLACE TASKS

Delivery Model

Our programme is typically delivered over 15 months. The full range of knowledge, skills and behaviours covered by this apprenticeship can be viewed [here](#).



Months 1-4

Monthly workshops and activities

Progress review

Topics include:

- » Statutory guidance
- » Communication
- » Child development

Months 5-8

Monthly workshops and activities

Progress review

Topics include:

- » Developing relationships
- » Assessment
- » Feedback

Months 9-12

Monthly workshops and activities

Progress review

Topics include:

- » Curriculum
- » Interventions
- » Impact of transitions

Months 13-15

Monthly workshops and activities

Progress review

Topics include:

- » Observations
- » Teaching strategies

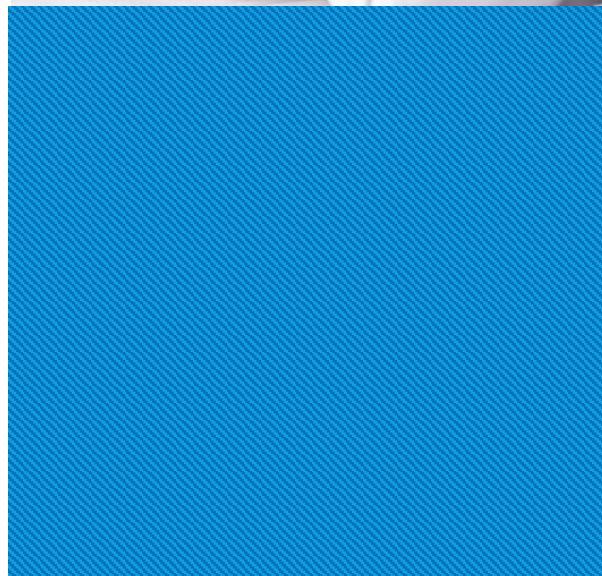
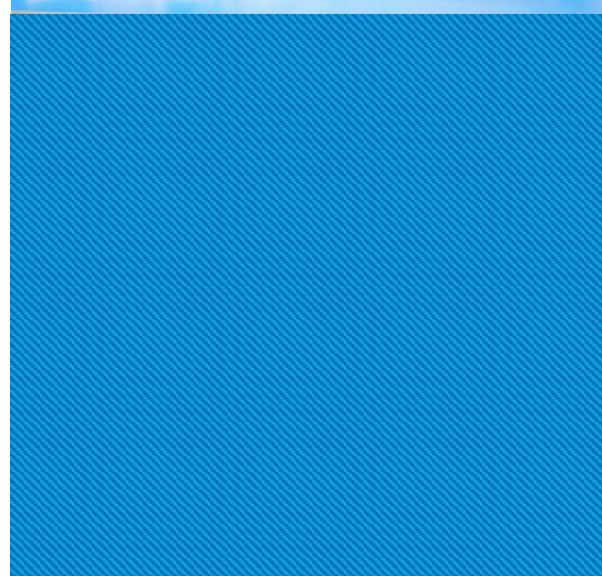
Benefits

For employers

- » Training costs could be fully covered!
- » Simple, paper-free onboarding process.
- » Easy to follow delivery model.
- » Line managers join progress review with learner and tutor every 12 weeks.
- » Functional Skills qualifications and training provided, if required.

For learners

- » Excellent support from enrolment through to assessment.
- » Access to an award-winning Learning Management System.
- » Individualised digital learning plan for every learner.
- » Monthly interactions with a designated tutor.
- » Access to a digital library of tools and resources.



FAQs

What are the English and maths requirements?

All learners are asked to provide English and maths qualification evidence (e.g. GCSE certificates) at enrolment. Learners who do not hold a Level 2 certificate or above in English and/or maths will receive support from a specialist tutor to complete a Functional Skills qualification. The aim is to complete this qualification within the first 6 months of the apprenticeship.

What is the final assessment process?

This is called the End-Point Assessment (EPA) of an apprenticeship. We prepare learners for EPA throughout our programme, including mock scenarios and individual preparation sessions with every learner.

The EPA for this apprenticeship is made up of 2 assessment methods:

- **Observation with questions:** 90-minute presentation with 20-minutes for questions.
- **Professional discussion supported by a portfolio of work:** This takes place over 90 minutes.

What do our learners say?

It is good to have monthly reflections where I can speak openly to my tutor, and she can provide information and guidance.

The support is very encouraging from the tutor. The workshops really support the assignments.

I love doing this Apprenticeship and the support network is AMAZING!

My Tutor is fantastic in explaining things, including everyone in workshops and allowing all voices to be heard. This has been a great experience.



0333 358 0579



info@logicaltraining.co.uk



logicaltraining.co.uk



Delta Bank, Metro Riverside, NE11 9DJ